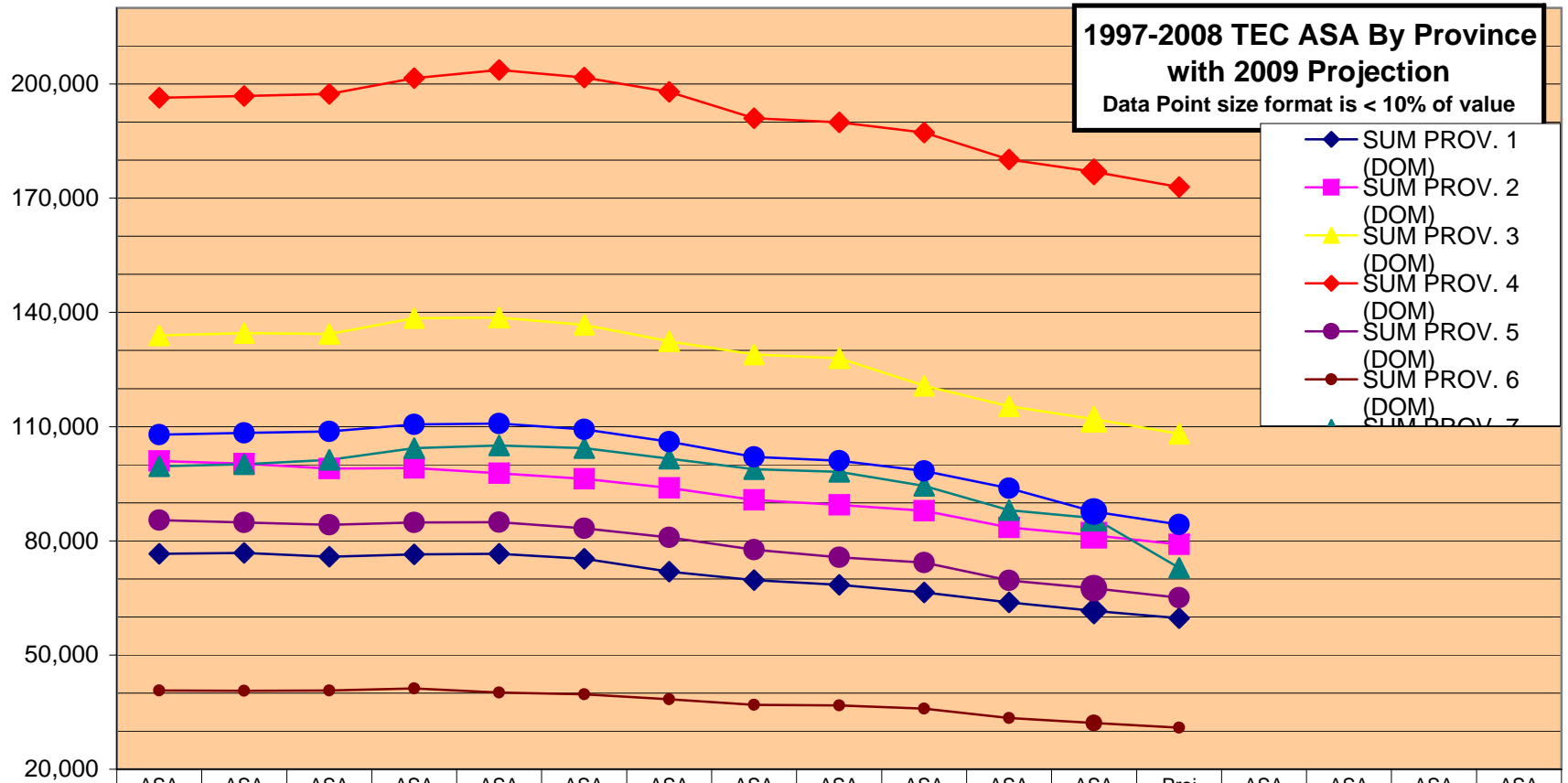
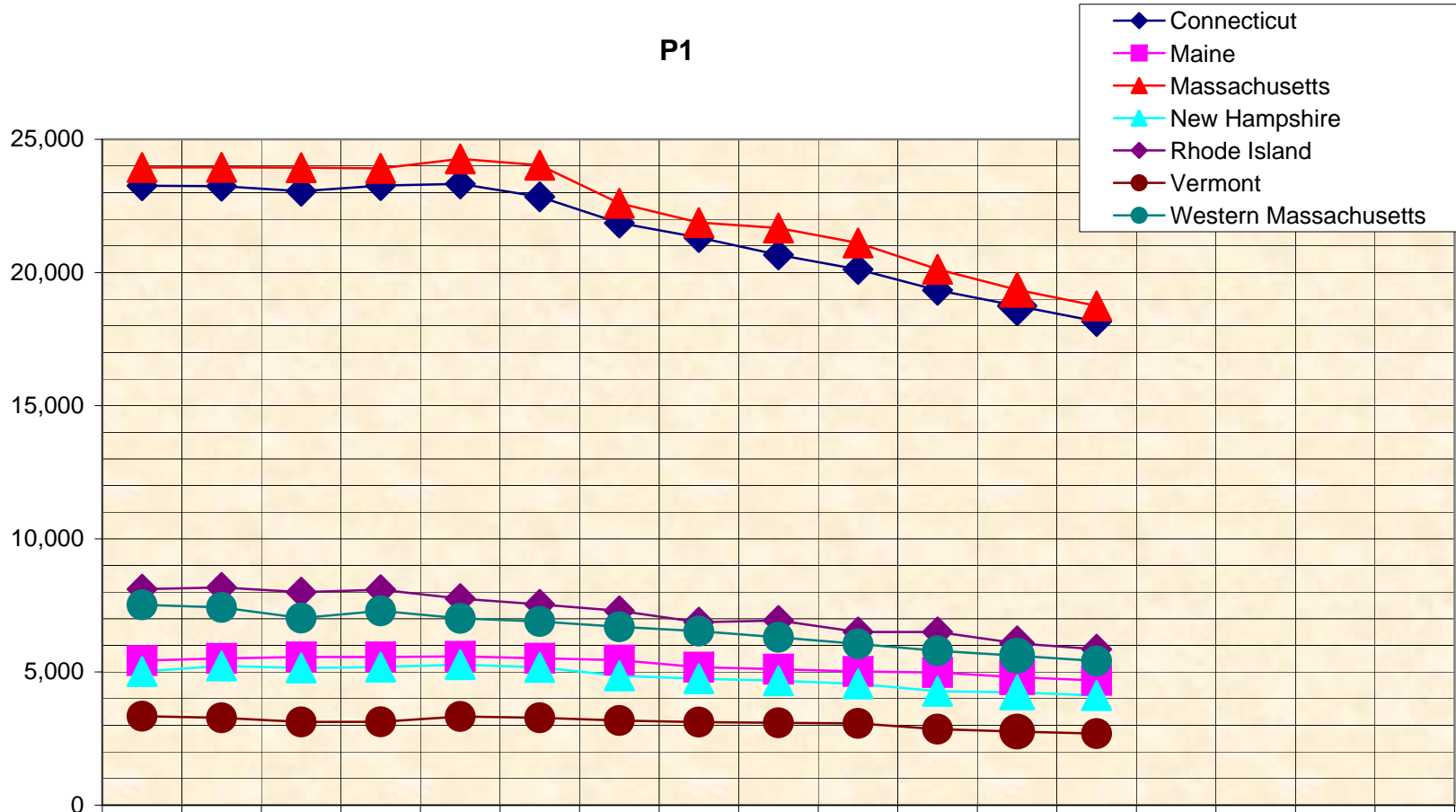


	ASA 1997	ASA 1998	ASA 1999	ASA 2000	ASA 2001	ASA 2002	ASA 2003	ASA 2004	ASA 2005	ASA 2006	ASA 2007	ASA 2008	Proj 2009	ASA 2009	ASA 2010	ASA 2011	ASA 2012
SUM TEC (DOM)	841,445	842,408	841,454	856,579	857,566	846,640	823,017	795,765	787,271	765,326	727,822	705,257	672,908				

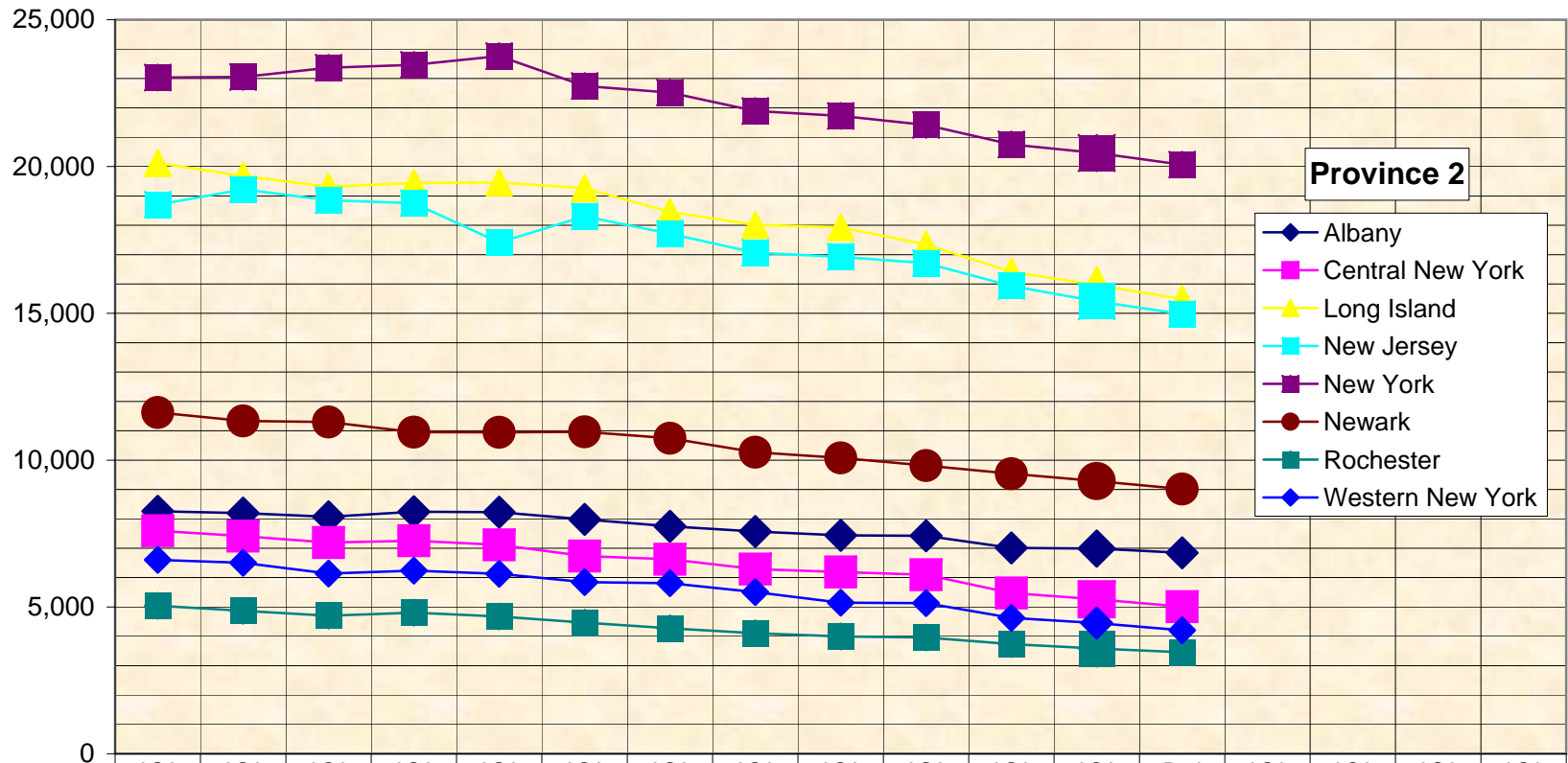


	ASA 1997	ASA 1998	ASA 1999	ASA 2000	ASA 2001	ASA 2002	ASA 2003	ASA 2004	ASA 2005	ASA 2006	ASA 2007	ASA 2008	Proj 2009	ASA 2009	ASA 2010	ASA 2011	ASA 2012
SUM PROV. 1 (DOM)	76,611	76,810	75,852	76,436	76,564	75,278	71,925	69,638	68,441	66,430	63,864	61,590	59,661				
SUM PROV. 2 (DOM)	100,964	100,266	98,933	99,160	97,731	96,301	93,873	90,704	89,425	87,889	83,485	81,410	79,059				
SUM PROV. 3 (DOM)	133,931	134,557	134,368	138,471	138,671	136,762	132,412	128,938	127,927	120,733	115,366	111,970	108,089				
SUM PROV. 4 (DOM)	196,380	196,891	197,392	201,526	203,716	201,679	197,896	191,046	189,931	187,266	180,143	176,974	172,951				
SUM PROV. 5 (DOM)	85,409	84,796	84,243	84,827	84,916	83,302	80,937	77,685	75,646	74,277	69,583	67,544	65,049				
SUM PROV. 6 (DOM)	40,717	40,634	40,652	41,188	40,148	39,682	38,356	36,919	36,747	35,905	33,442	32,128	30,951				
SUM PROV. 7 (DOM)	99,559	100,099	101,305	104,361	105,043	104,336	101,595	98,798	98,109	94,446	88,087	85,967	72,895				
SUM PROV. 8 (DOM)	107,874	108,355	108,709	110,610	110,777	109,300	106,023	102,037	101,045	98,380	93,852	87,674	84,254				

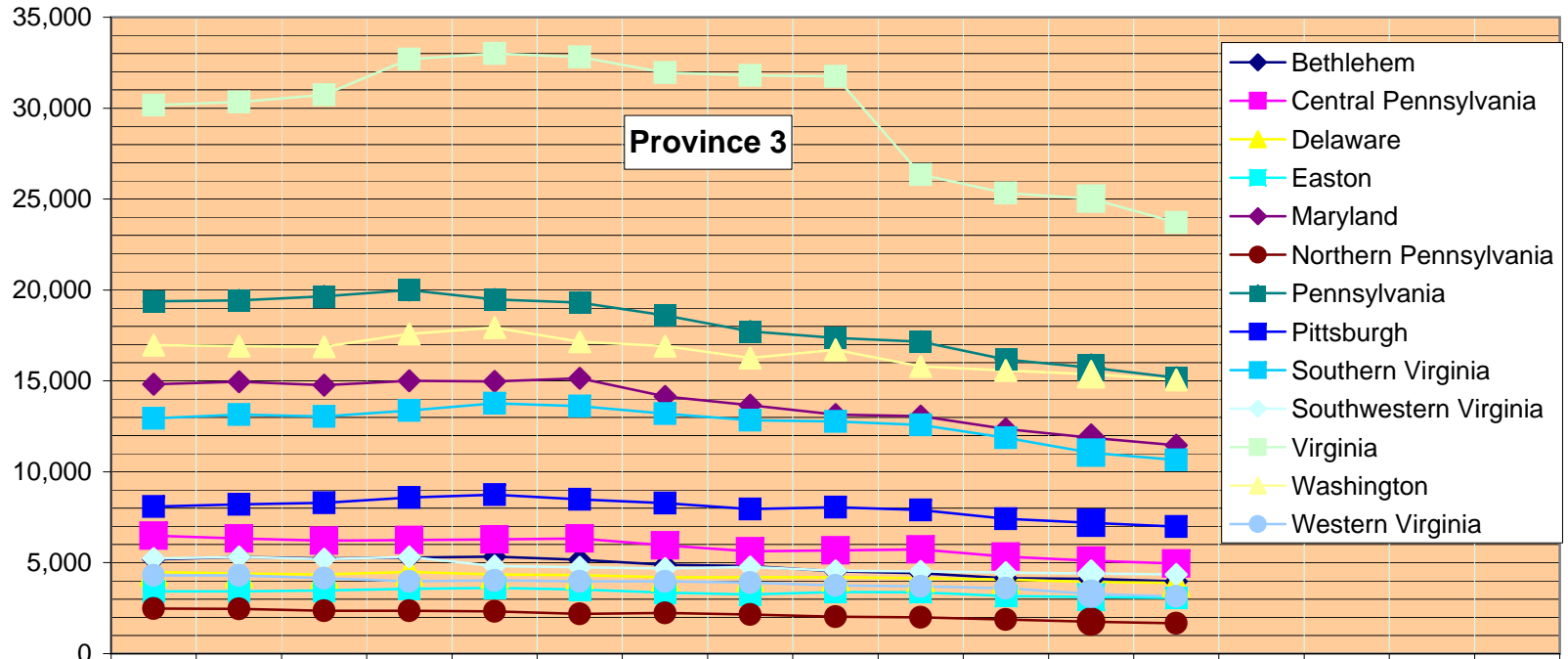
P1



	ASA 1997	ASA 1998	ASA 1999	ASA 2000	ASA 2001	ASA 2002	ASA 2003	ASA 2004	ASA 2005	ASA 2006	ASA 2007	ASA 2008	Proj 2009	ASA 2009	ASA 2010	ASA 2011	ASA 2012
Connecticut	23,256	23,242	23,053	23,265	23,329	22,841	21,859	21,314	20,663	20,118	19,332	18,747	18,166				
Maine	5,427	5,509	5,564	5,562	5,586	5,517	5,444	5,180	5,104	5,016	4,980	4,804	4,683				
Massachusetts	23,940	23,949	23,937	23,909	24,268	24,029	22,597	21,875	21,670	21,109	20,121	19,351	18,746				
New Hampshire	5,016	5,230	5,151	5,185	5,279	5,174	4,858	4,746	4,671	4,553	4,281	4,234	4,115				
Rhode Island	8,110	8,174	7,995	8,090	7,754	7,538	7,295	6,868	6,935	6,504	6,500	6,078	5,854				
Vermont	3,340	3,280	3,124	3,130	3,331	3,283	3,176	3,120	3,093	3,073	2,853	2,765	2,687				
Western Massachusetts	7,522	7,426	7,028	7,295	7,017	6,896	6,696	6,535	6,305	6,057	5,797	5,611	5,410				

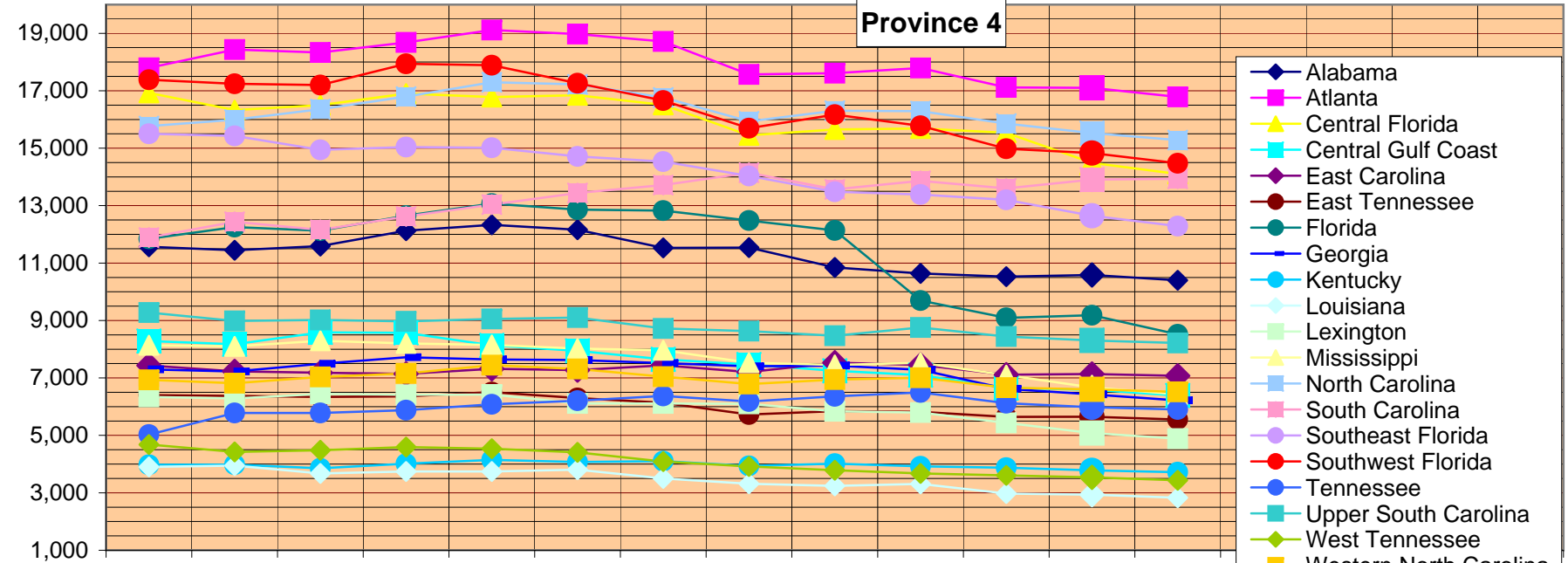


	ASA 1997	ASA 1998	ASA 1999	ASA 2000	ASA 2001	ASA 2002	ASA 2003	ASA 2004	ASA 2005	ASA 2006	ASA 2007	ASA 2008	Proj 2009	ASA 2009	ASA 2010	ASA 2011	ASA 2012
Albany	8,258	8,198	8,073	8,242	8,227	7,980	7,745	7,569	7,440	7,423	7,009	6,991	6,845				
Central New York	7,594	7,410	7,191	7,253	7,117	6,734	6,621	6,287	6,190	6,094	5,474	5,260	5,009				
Long Island	20,115	19,682	19,314	19,444	19,457	19,264	18,453	18,010	17,934	17,341	16,416	15,962	15,490				
New Jersey	18,698	19,221	18,854	18,754	17,414	18,304	17,711	17,065	16,923	16,710	15,933	15,412	14,976				
New York	23,032	23,049	23,364	23,466	23,763	22,743	22,517	21,893	21,723	21,418	20,755	20,459	20,062				
Newark	11,623	11,336	11,299	10,954	10,948	10,966	10,745	10,267	10,076	9,817	9,536	9,289	9,014				
Rochester	5,041	4,867	4,700	4,808	4,677	4,464	4,271	4,107	3,996	3,959	3,735	3,585	3,457				
Western New York	6,603	6,503	6,138	6,239	6,128	5,846	5,810	5,506	5,143	5,127	4,627	4,452	4,206				

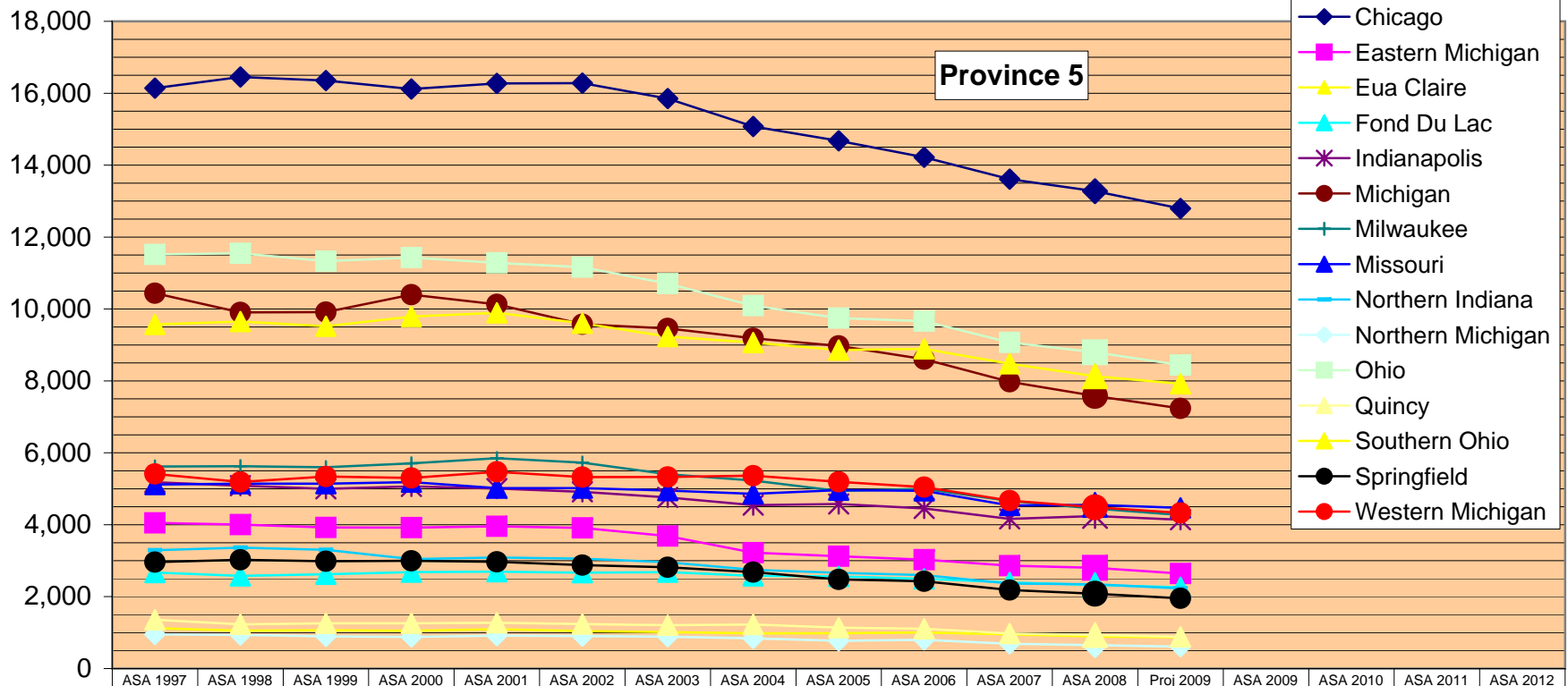


	ASA 1997	ASA 1998	ASA 1999	ASA 2000	ASA 2001	ASA 2002	ASA 2003	ASA 2004	ASA 2005	ASA 2006	ASA 2007	ASA 2008	Proj 2009	ASA 2009	ASA 2010	ASA 2011	ASA 2012
Bethlehem	5,181	5,318	5,231	5,277	5,335	5,162	4,879	4,820	4,532	4,423	4,148	4,121	3,978				
Central Pennsylvania	6,484	6,336	6,220	6,252	6,274	6,330	5,958	5,627	5,680	5,735	5,342	5,111	4,949				
Delaware	4,483	4,409	4,354	4,499	4,357	4,315	4,206	4,195	4,200	4,148	4,078	3,936	3,883				
Easton	3,421	3,427	3,483	3,568	3,621	3,520	3,357	3,249	3,388	3,366	3,164	3,112	3,063				
Maryland	14,816	14,946	14,762	15,004	14,979	15,148	14,151	13,666	13,155	13,068	12,358	11,878	11,453				
Northern Pennsylvania	2,482	2,462	2,359	2,350	2,322	2,191	2,231	2,149	2,022	1,989	1,869	1,761	1,675				
Pennsylvania	19,372	19,434	19,651	20,003	19,486	19,303	18,609	17,730	17,354	17,151	16,173	15,726	15,185				
Pittsburgh	8,088	8,215	8,297	8,580	8,745	8,480	8,281	7,944	8,054	7,902	7,410	7,193	6,985				
Southern Virginia	12,936	13,150	13,050	13,369	13,765	13,607	13,204	12,831	12,764	12,574	11,879	11,055	10,652				
Southwestern Virginia	5,229	5,316	5,199	5,311	4,813	4,755	4,680	4,765	4,563	4,532	4,449	4,408	4,354				
Virginia	30,165	30,329	30,739	32,691	33,009	32,820	31,954	31,804	31,754	26,353	25,332	25,026	23,706				
Washington	16,964	16,911	16,878	17,584	17,936	17,162	16,919	16,255	16,709	15,794	15,565	15,364	15,059				
Western Virginia	4,310	4,304	4,145	3,983	4,029	3,969	3,983	3,903	3,752	3,698	3,599	3,279	3,148				

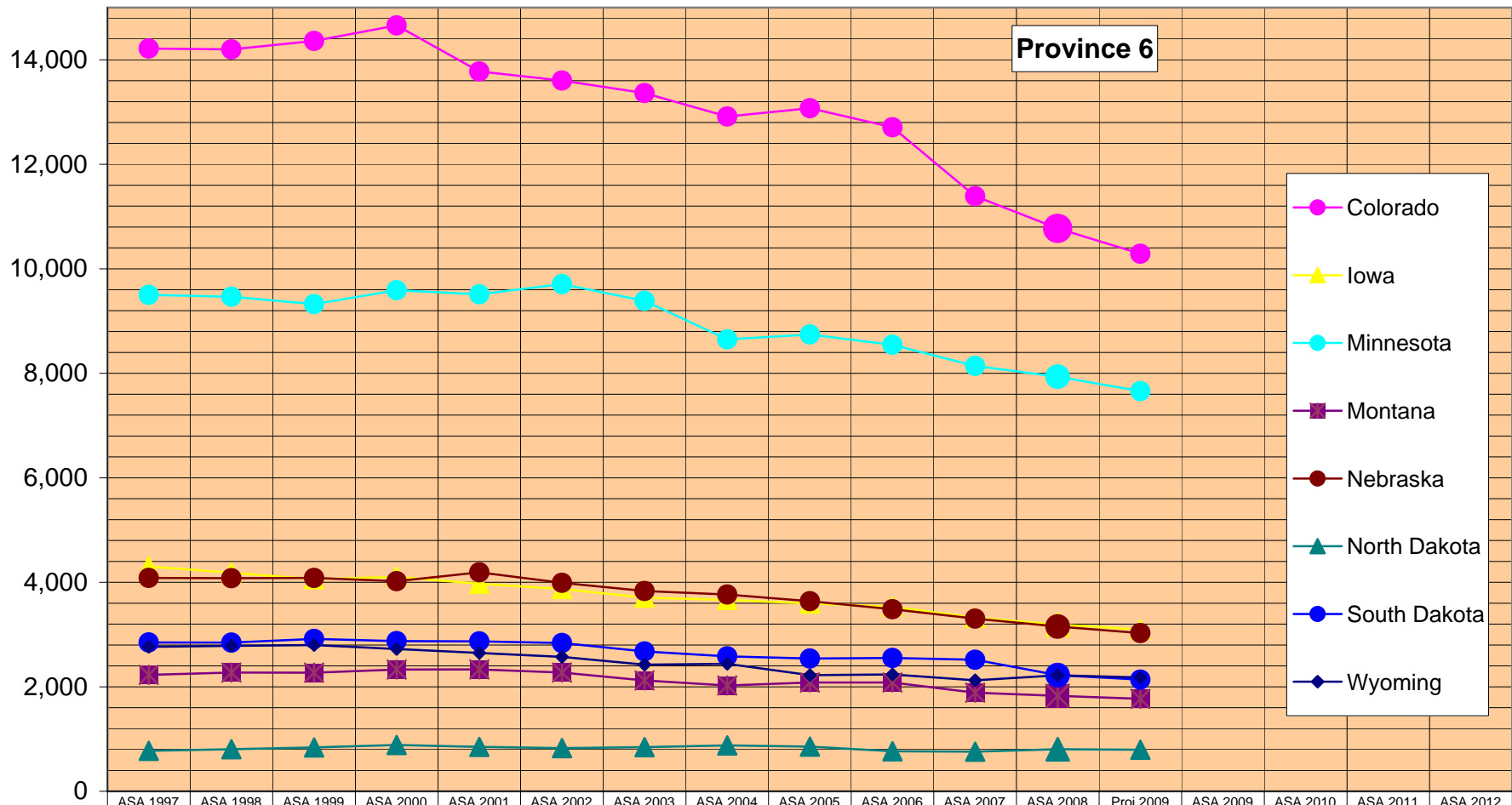
**Province 4**



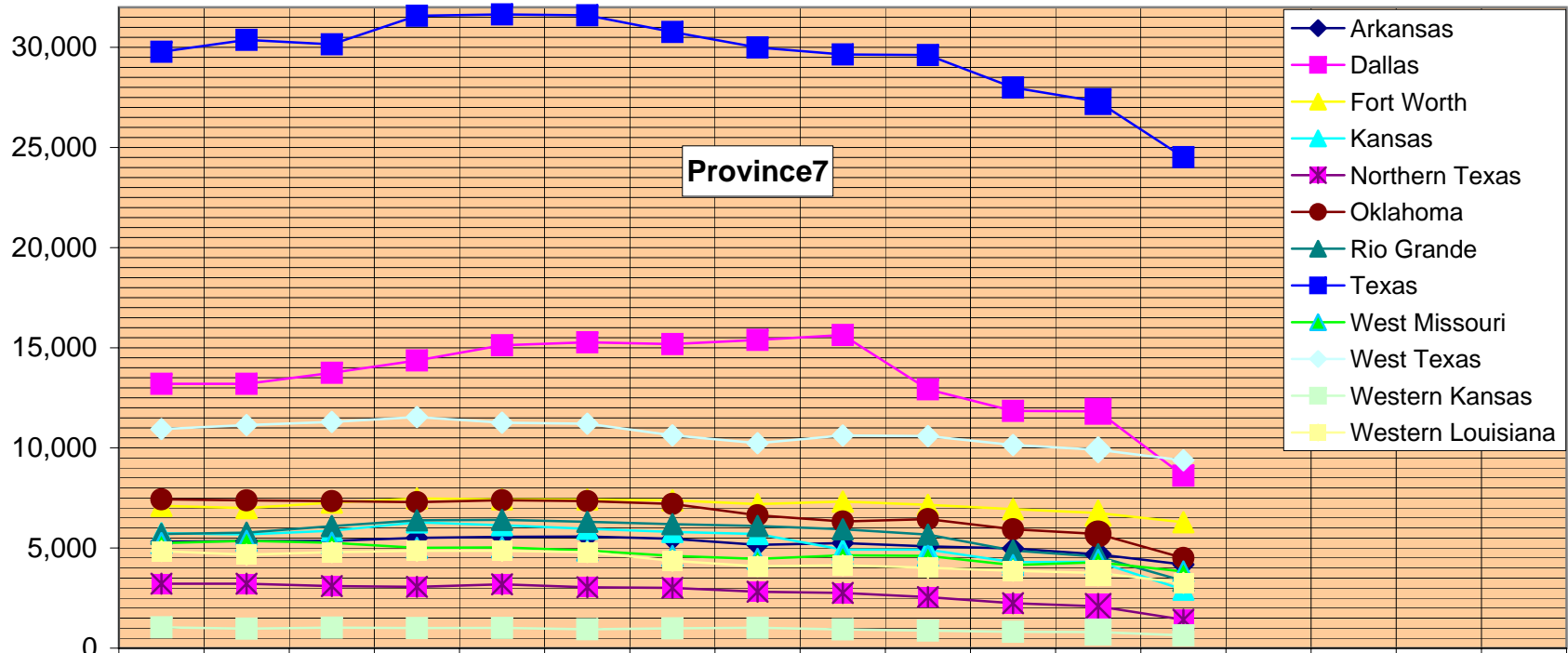
	ASA 1997	ASA 1998	ASA 1999	ASA 2000	ASA 2001	ASA 2002	ASA 2003	ASA 2004	ASA 2005	ASA 2006	ASA 2007	ASA 2008	Proj 2009	ASA 2009	ASA 2010	ASA 2011	ASA 2012
Alabama	11,567	11,448	11,591	12,125	12,333	12,163	11,527	11,536	10,846	10,639	10,526	10,585	10,400				
Atlanta	17,798	18,432	18,331	18,682	19,113	18,973	18,714	17,567	17,612	17,792	17,117	17,103	16,785				
Central Florida	16,925	16,330	16,500	16,904	16,782	16,844	16,509	15,449	15,654	15,686	15,535	14,492	14,100				
Central Gulf Coast	8,286	8,171	8,587	8,572	8,134	7,946	7,646	7,469	7,249	7,099	6,650	6,590	6,390				
East Carolina	7,435	7,228	7,183	7,140	7,319	7,275	7,439	7,206	7,531	7,454	7,111	7,137	7,074				
East Tennessee	6,403	6,376	6,341	6,361	6,506	6,301	6,134	5,727	5,846	5,820	5,645	5,649	5,552				
Florida	11,843	12,255	12,126	12,653	13,068	12,863	12,826	12,482	12,137	9,695	9,090	9,185	8,516				
Georgia	7,298	7,224	7,493	7,723	7,645	7,624	7,516	7,404	7,430	7,281	6,621	6,428	6,220				
Kentucky	3,978	3,980	3,853	4,016	4,148	4,073	4,102	3,938	4,014	3,923	3,876	3,781	3,718				
Louisiana	3,905	3,948	3,677	3,741	3,745	3,808	3,502	3,316	3,240	3,308	2,973	2,937	2,829				
Lexington	6,341	6,285	6,441	6,413	6,422	6,111	6,110	6,095	5,838	5,797	5,433	5,079	4,886				
Mississippi	8,139	8,102	8,297	8,204	8,149	8,023	7,963	7,532	7,451	7,528	7,099	6,672	6,429				
North Carolina	15,768	15,995	16,358	16,793	17,294	17,224	16,765	15,936	16,305	16,288	15,856	15,527	15,282				
South Carolina	11,889	12,439	12,157	12,623	13,038	13,441	13,719	14,143	13,564	13,861	13,601	13,906	13,938				
Southeast Florida	15,501	15,430	14,944	15,041	15,016	14,712	14,536	14,034	13,484	13,385	13,203	12,645	12,286				
Southwest Florida	17,386	17,241	17,197	17,938	17,887	17,263	16,661	15,696	16,169	15,778	14,981	14,831	14,474				
Tennessee	5,029	5,782	5,782	5,878	6,082	6,210	6,373	6,181	6,360	6,494	6,121	5,980	5,900				
Upper South Carolina	9,278	8,984	9,021	8,969	9,055	9,103	8,722	8,631	8,468	8,755	8,439	8,303	8,219				
West Tennessee	4,679	4,424	4,480	4,595	4,536	4,411	4,088	3,917	3,788	3,675	3,606	3,540	3,436				
Western North Carolina	6,932	6,817	7,033	7,155	7,444	7,311	7,044	6,787	6,945	7,008	6,660	6,604	6,516				



	ASA 1997	ASA 1998	ASA 1999	ASA 2000	ASA 2001	ASA 2002	ASA 2003	ASA 2004	ASA 2005	ASA 2006	ASA 2007	ASA 2008	Proj 2009	ASA 2009	ASA 2010	ASA 2011	ASA 2012
Chicago	16,141	16,451	16,352	16,118	16,271	16,280	15,851	15,073	14,676	14,221	13,611	13,276	12,796				
Eastern Michigan	4,051	4,005	3,922	3,921	3,955	3,912	3,684	3,224	3,124	3,029	2,862	2,803	2,643				
Eua Claire	1,122	1,054	1,066	1,050	1,095	1,042	1,015	980	983	1,003	952	892	868				
Fond Du Lac	2,671	2,580	2,622	2,682	2,696	2,667	2,681	2,579	2,561	2,494	2,396	2,326	2,259				
Indianapolis	5,181	5,087	4,999	5,066	5,007	4,916	4,759	4,543	4,575	4,455	4,161	4,241	4,140				
Michigan	10,438	9,907	9,912	10,400	10,129	9,574	9,461	9,184	8,975	8,606	7,975	7,580	7,235				
Milwaukee	5,618	5,627	5,601	5,707	5,851	5,728	5,403	5,231	4,939	4,999	4,661	4,450	4,272				
Missouri	5,119	5,142	5,142	5,185	5,020	5,018	4,949	4,861	4,964	4,943	4,535	4,551	4,471				
Northern Indiana	3,291	3,362	3,302	3,045	3,087	3,057	2,955	2,745	2,661	2,597	2,364	2,343	2,230				
Northern Michigan	952	936	894	881	917	904	889	838	774	800	690	653	610				
Ohio	11,519	11,550	11,330	11,431	11,281	11,164	10,706	10,091	9,745	9,661	9,069	8,795	8,440				
Quincy	1,357	1,228	1,257	1,256	1,275	1,236	1,206	1,225	1,139	1,105	974	935	885				
Southern Ohio	9,573	9,652	9,519	9,788	9,892	9,604	9,232	9,065	8,859	8,890	8,478	8,129	7,918				
Springfield	2,962	3,026	2,985	2,998	2,969	2,876	2,816	2,683	2,479	2,429	2,183	2,083	1,953				
Western Michigan	5,414	5,189	5,340	5,299	5,471	5,324	5,330	5,363	5,192	5,045	4,672	4,487	4,328				



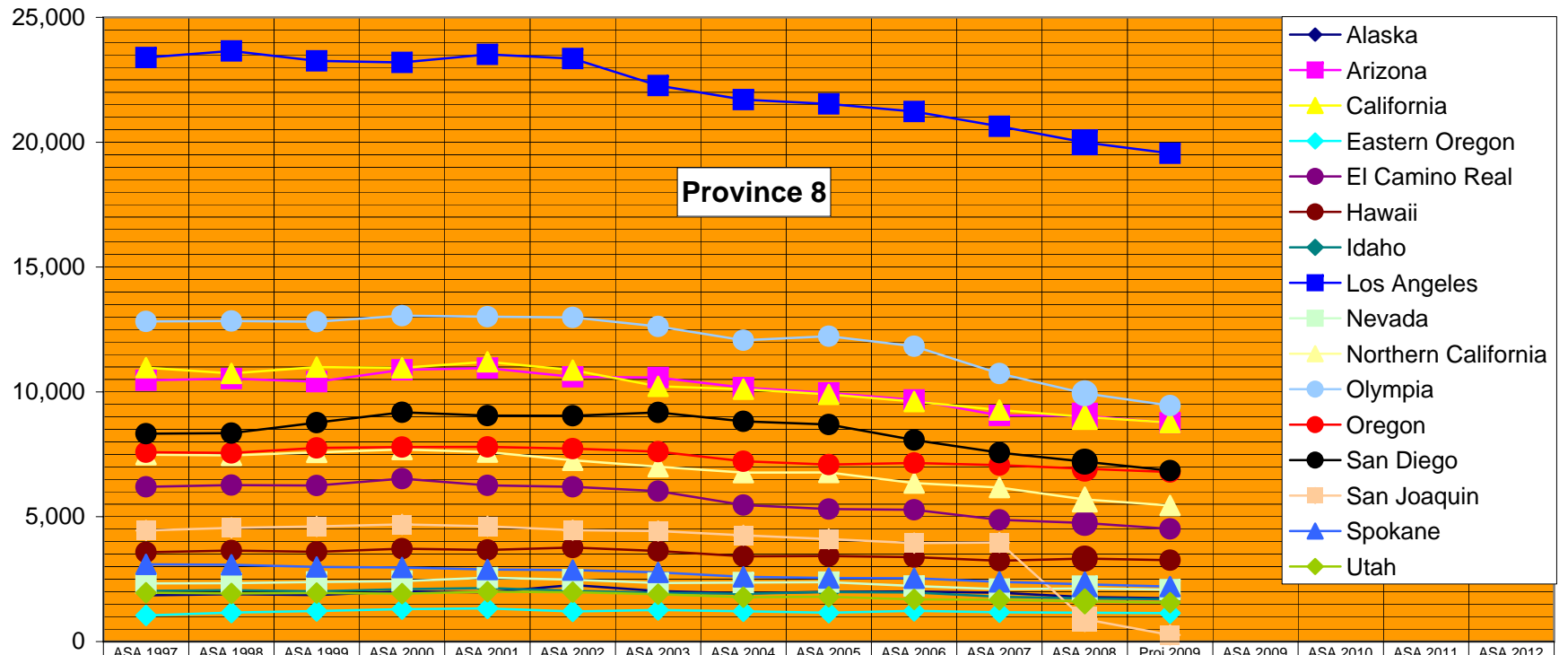
	ASA 1997	ASA 1998	ASA 1999	ASA 2000	ASA 2001	ASA 2002	ASA 2003	ASA 2004	ASA 2005	ASA 2006	ASA 2007	ASA 2008	Proj 2009	ASA 2009	ASA 2010	ASA 2011	ASA 2012
Colorado	14,215	14,201	14,361	14,658	13,778	13,602	13,363	12,916	13,073	12,710	11,392	10,772	10,289				
Iowa	4,302	4,182	4,059	4,104	3,971	3,872	3,705	3,664	3,593	3,533	3,321	3,193	3,096				
Minnesota	9,502	9,466	9,323	9,590	9,513	9,708	9,388	8,650	8,742	8,546	8,140	7,935	7,660				
Montana	2,227	2,273	2,269	2,329	2,332	2,272	2,120	2,024	2,081	2,083	1,887	1,827	1,770				
Nebraska	4,084	4,078	4,084	4,022	4,190	3,991	3,834	3,765	3,637	3,483	3,304	3,153	3,027				
North Dakota	775	804	840	887	849	826	845	879	856	765	758	804	794				
South Dakota	2,848	2,847	2,916	2,874	2,868	2,839	2,677	2,583	2,541	2,550	2,517	2,224	2,138				
Wyoming	2,764	2,783	2,800	2,724	2,647	2,572	2,424	2,438	2,224	2,235	2,123	2,220	2,178				



Province7

- ◆ Arkansas
- Dallas
- ▲ Fort Worth
- ▲ Kansas
- ✱ Northern Texas
- Oklahoma
- ▲ Rio Grande
- Texas
- ▲ West Missouri
- ◆ West Texas
- Western Kansas
- Western Louisiana

	ASA 1997	ASA 1998	ASA 1999	ASA 2000	ASA 2001	ASA 2002	ASA 2003	ASA 2004	ASA 2005	ASA 2006	ASA 2007	ASA 2008	Proj 2009	ASA 2009	ASA 2010	ASA 2011	ASA 2012
Arkansas	5,321	5,349	5,356	5,510	5,558	5,575	5,465	5,158	5,244	5,085	4,976	4,684	4,175				
Dallas	13,201	13,198	13,751	14,363	15,123	15,274	15,183	15,389	15,639	12,922	11,849	11,826	8,611				
Fort Worth	7,104	6,995	7,270	7,474	7,432	7,423	7,377	7,195	7,321	7,155	6,939	6,745	6,285				
Kansas	5,736	5,675	5,863	6,281	6,141	5,960	5,807	5,699	4,918	4,922	4,297	4,311	2,924				
Northern Texas	3,219	3,219	3,100	3,064	3,188	3,037	3,007	2,819	2,754	2,550	2,247	2,090	1,421				
Oklahoma	7,431	7,382	7,341	7,290	7,389	7,342	7,202	6,640	6,321	6,444	5,937	5,697	4,502				
Rio Grande	5,698	5,770	6,097	6,384	6,408	6,312	6,187	6,102	5,940	5,667	4,875	4,572	3,360				
Texas	29,780	30,369	30,146	31,579	31,645	31,596	30,769	29,993	29,643	29,611	27,994	27,290	24,515				
West Missouri	5,246	5,359	5,263	5,011	5,032	4,875	4,611	4,460	4,640	4,609	4,144	4,289	3,829				
West Texas	10,939	11,142	11,299	11,544	11,257	11,205	10,630	10,232	10,619	10,592	10,147	9,907	9,375				
Western Kansas	1,038	971	1,022	1,003	1,009	945	992	1,021	933	874	818	801	636				
Western Louisiana	4,846	4,670	4,797	4,858	4,861	4,792	4,365	4,090	4,137	4,015	3,864	3,755	3,263				



	ASA 1997	ASA 1998	ASA 1999	ASA 2000	ASA 2001	ASA 2002	ASA 2003	ASA 2004	ASA 2005	ASA 2006	ASA 2007	ASA 2008	Proj 2009	ASA 2009	ASA 2010	ASA 2011	ASA 2012
Alaska	1,849	1,898	1,864	2,009	1,974	2,266	2,022	1,933	1,993	2,005	1,954	1,783	1,736				
Arizona	10,465	10,531	10,409	10,882	10,954	10,604	10,575	10,170	9,958	9,677	9,054	9,044	8,754				
California	10,968	10,742	10,996	10,965	11,208	10,873	10,221	10,106	9,899	9,613	9,277	9,001	8,769				
Eastern Oregon	1,046	1,164	1,224	1,297	1,329	1,205	1,267	1,216	1,155	1,229	1,172	1,158	1,136				
El Camino Real	6,200	6,270	6,251	6,524	6,254	6,196	6,025	5,470	5,309	5,279	4,876	4,750	4,516				
Hawaii	3,579	3,646	3,596	3,719	3,671	3,768	3,628	3,418	3,429	3,379	3,239	3,321	3,260				
Idaho	2,030	2,061	2,015	2,097	2,145	2,032	1,957	1,913	1,985	1,965	1,794	1,732	1,688				
Los Angeles	23,392	23,654	23,260	23,194	23,514	23,352	22,271	21,706	21,535	21,230	20,636	19,991	19,554				
Nevada	2,327	2,338	2,384	2,422	2,561	2,480	2,344	2,361	2,378	2,223	2,099	2,127	2,084				
Northern California	7,485	7,458	7,578	7,694	7,589	7,264	7,005	6,769	6,772	6,350	6,168	5,694	5,451				
Olympia	12,820	12,839	12,808	13,052	13,013	12,982	12,622	12,071	12,227	11,826	10,735	9,944	9,451				
Oregon	7,583	7,553	7,758	7,793	7,798	7,725	7,606	7,224	7,087	7,154	7,064	6,924	6,791				
San Diego	8,323	8,346	8,768	9,181	9,051	9,043	9,175	8,822	8,691	8,071	7,564	7,204	6,845				
San Joaquin	4,448	4,551	4,610	4,693	4,618	4,461	4,425	4,255	4,105	3,947	3,965	896	262				
Spokane	3,092	3,079	2,992	2,965	2,889	2,862	2,770	2,592	2,548	2,538	2,393	2,293	2,204				
Utah	1,956	1,924	1,942	1,921	1,993	1,976	1,896	1,775	1,793	1,689	1,672	1,612	1,558				